



# Micro-moths of Carphin

S.T. Buckland

# Micro-moths of Carphin

S.T. Buckland

I have included those species that I have been able to photograph on Carphin Farm. My thanks go to Nigel Voaden for identifying the more difficult species — and some of the less difficult species!

Steve Buckland

[steve@st-andrews.ac.uk](mailto:steve@st-andrews.ac.uk)

11/April/2025

# Contents — micro-moths

<i>Acleris rhombana</i>	4	<i>Celypha cespitana</i>	16	<i>Monopis weaverella</i>	27
<i>Aethes cnicana</i>	5	<i>Celypha lacunana</i>	17	<i>Neofaculta ericetella</i>	28
<i>Agonopterix heracliana</i>	6	<i>Coleophora albicosta</i>	18	<i>Ochsenheimeria urella</i>	29
<i>Agonopterix nervosa</i>	7	<i>Crambus pascuella</i>	19	<i>Phycitodes</i> sp.	30
<i>Agonopterix umbellana</i>	8	<i>Cydia ulicetana</i>	20	<i>Pleurota bicostella</i>	31
<i>Agriphila inquinatella</i>	9	<i>Diurnea fagella</i>	21	<i>Rhigognostis incarnatella</i>	32
<i>Ancylis unguicella</i>	10	<i>Eana osseana</i>	22	<i>Rhopobota naevana</i>	33
<i>Anthophila fabriciana</i>	11	<i>Elachista canapennella</i>	23	<i>Scoparia pyralella</i>	34
<i>Bryotropha terrella</i>	12	<i>Micropterix aureatella</i>	24	<i>Stenoptilia pterodactyla</i>	35
<i>Caloptilia rufipennella</i>	13	<i>Mirificarma mulinella</i>	25	<i>Teleiopsis diffinis</i>	36
<i>Catoptria falsella</i>	14	<i>Monochroa tenebrella</i>	26	<i>Tortricodes alternella</i>	37
<i>Catoptria margaritella</i>	15				



## Rhomboid tortrix *Acleris rhombana*

A common hedgerow species.



## Thistle straw *Aethes cnicana*

A common species where thistles grow.







Common brindled brown

*Agonopterix heracliana*

A very common species, often found wintering in garages or outbuildings.





## Burnt-tip buff *Agonopterix nervosa*

A common species of woodland, heathland and hedgerows.





## Gorse buff *Agonopterix umbellana*

A scarce species, seldom recorded in Fife. Most Scottish records are from coastal areas. These were recorded at Carphin in late February 2025.







## Barred grass-moth *Agriphila inquinatella*

A locally-distributed species in Fife, occurring mostly at or near the coast. This was the second record from the Howe of Fife and surrounding area, and was at Black Craig in mid-August 2022.



## Heath hook-wing *Ancyliis unguicella*

A locally-distributed species of heathland and moorland. These were at Black Craig.

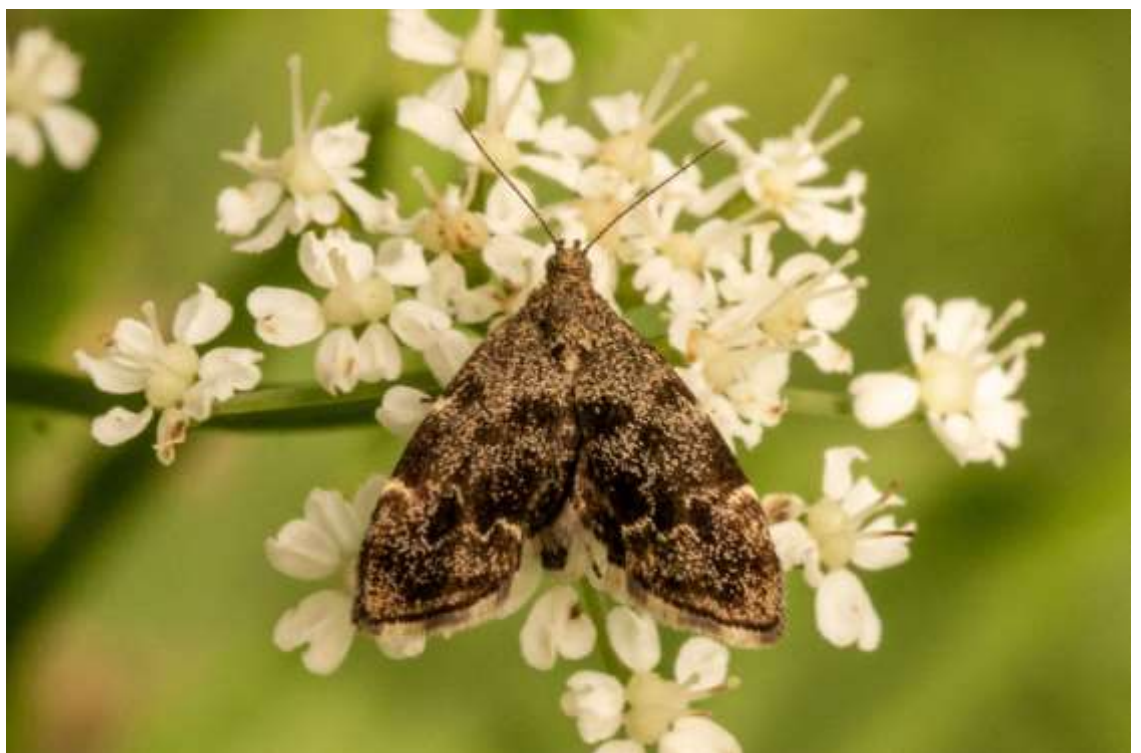






## Nettle-tap *Anthophila fabriciana*

A very common species associated with nettles.







Brown moss-moth

*Bryotropa terrella*

A common species in a range of habitats.



## Rufous stilt *Caloptilia rufipennella*

A scarce species in east Fife. It is associated with sycamores and other maples. This one was at Black Craig in early September.



## Chequered grass-moth *Catoptria falsella*

A locally-distributed species in Scotland, associated with moss on roofs.





## Pearl-banded grass-moth *Catoptria margaritella*

A locally-distributed species, mostly in upland areas. These were on Black Craig.





## Thyme marble *Celypha cespitana*

A locally-distributed species that is mostly coastal in Fife. This one was on Black Craig in mid-August 2022.





## Common marble *Celypha lacunana*

A common species, often seen in daylight.





## Gorse case-bearer *Coleophora albicosta*

Common wherever gorse, its food plant, is plentiful.





## White-banded grass-moth *Crambus pascuella*

A widely-distributed grass moth, but not recorded from many sites in Fife. These were on Black Craig.





## Common gorse moth *Cydia ulicetana*

Common wherever gorse is abundant.







## Early reveller *Diurnea fagella*

A common woodland moth in spring.





## Dotted cloak *Eana osseana*

A common species of rough grassland and moorland.





## Common grass-miner *Elachista canapennella*

A common species of grassy habitats.





Yellow-barred pollen-moth *Micropterix aureatella*

Common on heathland and moorland.





## Gorse streak *Mirificarma mulinella*

Common on heathland and moorland.



## Burnished sorrel moth *Monochroa tenebrella*

A locally-distributed species.





## Carrion moth *Monopis weaverella*

A common species of woods and gardens.



## Heather grey *Neofaculta ericetella*

A common species of heather moorland. This one was at Black Craig.





## Bull's-horn stem moth *Ochsenheimeria urella*

Not often recorded, these were on Black Craig in early August 2024.







## *Phycitodes* sp.

A group of three species that cannot be reliably separated from images. There are a few records from Fife, mostly at or near the coast. This one was at Black Craig in early September 2023.





## Heath streak *Pleurota bicostella*

These moths were at Black Craig. Although common where heather occurs in parts of the country, this is only the second location in Fife where this species has been recorded.





## Northern diamond-back *Rhigognostis incarnatella*

A scarce grassland species, with a patchy distribution across northern Britain. These were at Carphin in late March and early April 2025.







## Holly tortrix *Rhopobota naevana*

Not restricted to holly, this tiny moth can occur in a wide range of habitats. This one was high up on Black Craig.



## Brown-spot grey *Scoparia pyralella*

A locally-distributed species of open habitats, where ribwort plantain grows.





## Brown plume *Stenoptilia pterodactyla*

A locally-distributed species of woodland margins and dry grassland. It is common on the slopes of Black Craig.







## Common groundling *Teleiopsis diffinis*

Except at Tentsmuir, this is a rare species in Fife. This one was at Black Craig in early September 2023.





## Spring harbinger *Tortricodes alternella*

A locally-distributed species in Scotland, associated with deciduous trees and especially oaks. It flies in late winter and early spring.

