



Butterflies of the East Neuk of Fife and the Isle of May

S.T. Buckland

Butterflies of the East Neuk of Fife and the Isle of May

S.T. Buckland

I have included those species I have managed to catch on camera in the East Neuk and the Isle of May, which is a near-complete list of those species regularly recorded there. I have taken the East Neuk to be the area bounded by the coast from East Sands (St Andrews) to Lower Largo, and inland by a line along the Lade Braes, through Magus Muir, Pitscottie, Ceres, then along the road south to Lower Largo.

Steve Buckland

steve@st-andrews.ac.uk

27/June/2024

Contents

Large white	4
Small white	5
Green-veined white	6
Orange tip	7
Small copper	8
Northern brown argus	9
Common blue	10
Dark green fritillary	11
Red admiral	12
Painted lady	13
Small tortoiseshell	14
Peacock	15
Comma	16
Speckled wood	17
Wall brown	18
Meadow brown	19
Ringlet	20
Small heath	21



Large white

A common species, though usually less common than the small white and green-veined white.





Small white

Common especially in farmland, but usually less common than the green-veined white.





Green-veined white

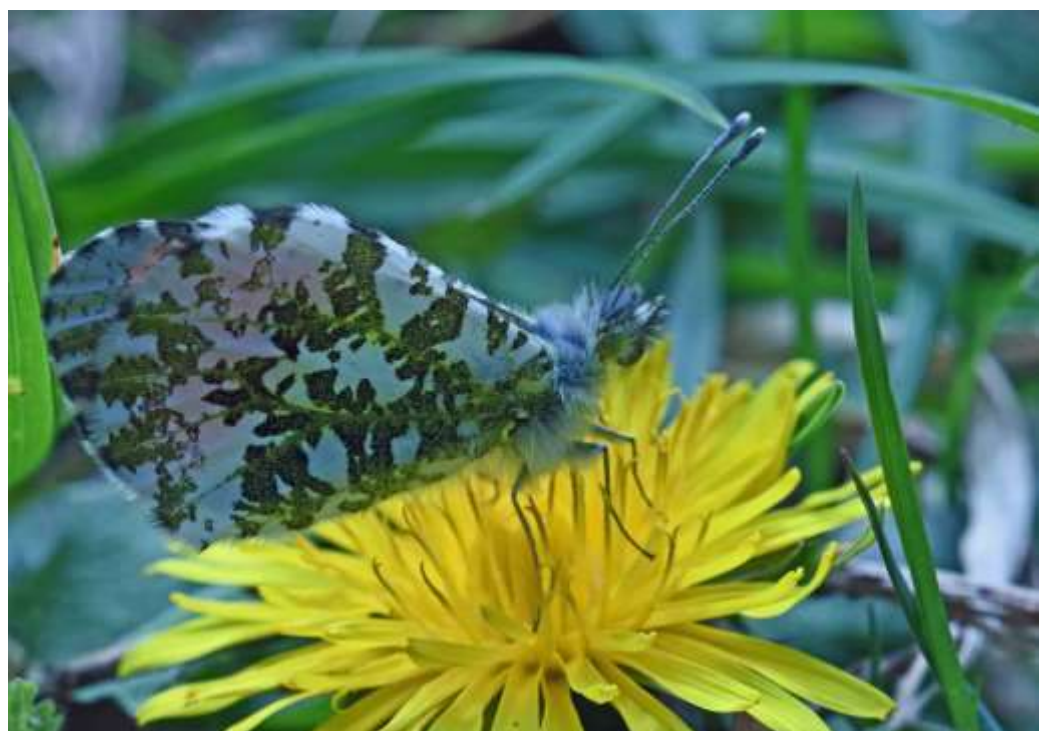
A very common species.





Orange tip

An early-season species that has spread through Fife.





Small copper

Fairly widely distributed in Fife. This individual was at Bankhead Moss in mid-September 2018.





Northern brown argus

An uncommon species that occurs in the areas of rock rose on the coast path north-west of Earlsferry.





Common blue

Common at a few locations, such as at Ruddon's Point. Male above, female below.





Dark green fritillary

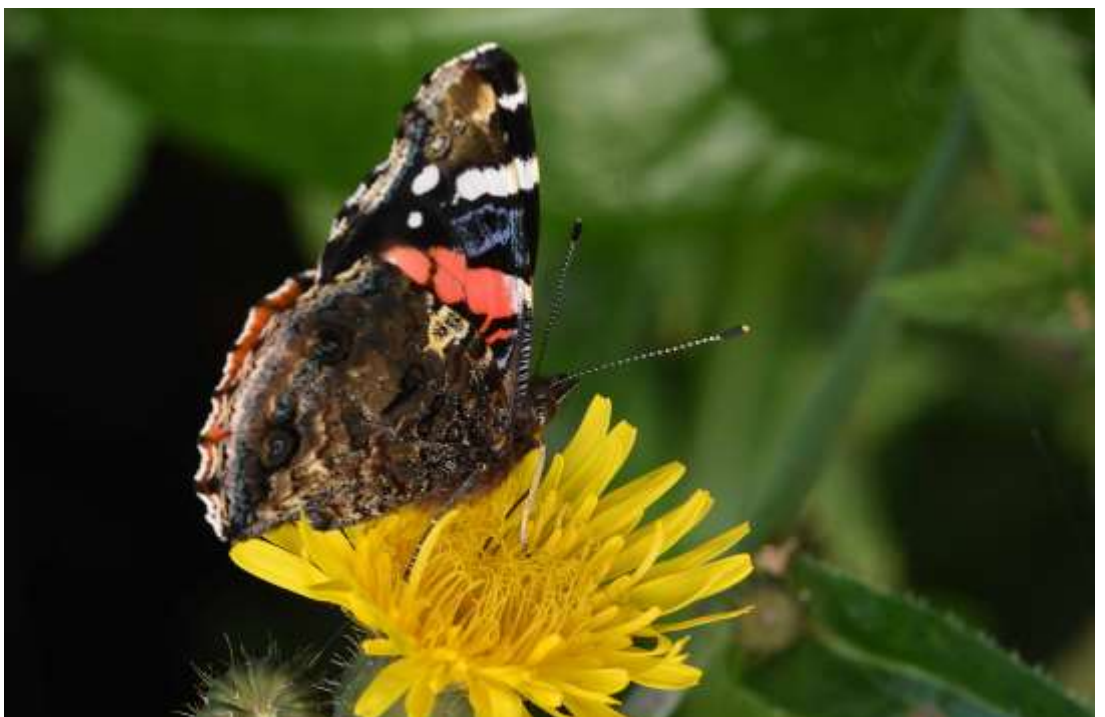
A scarce species that occurs at one or two coastal sites.





Red admiral

A common species especially in late summer.





Painted lady

A migrant species that sometimes arrives in Britain in large numbers.





Small tortoiseshell

A common and familiar species.





Peacock

The peacock has spread north in recent years and is now one of the most common butterflies in Fife.





Comma

A distinctive species that has spread northwards into Fife. These were on buddleia at the eastern end of Bishop's Wood in August 2018.





Speckled wood

This species is a recent arrival in Fife. The two individuals above and below left were at the top end of Kilminning in late September 2019, while the individual below right was at Kilconquhar Loch in mid-September 2018.





Wall brown

The wall is a recent addition to the butterflies of the East Neuk, having spread from the south. These were at Fife Ness in late August 2021.





Meadow brown

A common species of grassland.





Ringlet

Common in grassland.





Small heath

Locally distributed, but can be numerous where it occurs, as at Shell Bay.

