



Butterflies of Bankhead Moss

S.T. Buckland

Butterflies of Bankhead Moss

S.T. Buckland

I have included just those species I have managed to catch on camera at Bankhead Moss.

Steve Buckland

steve@st-andrews.ac.uk

13/April/2025

Contents

Small white	4
Green-veined white	5
Orange tip	6
Small copper	7
Red admiral	8
Small tortoiseshell	9
Peacock	10
Comma	11
Speckled wood	12
Meadow brown	13
Ringlet	14



Small white

Common especially in farmland, but usually less common than the green-veined white.



Green-veined white

A very common species. The photo bottom right was taken at night when I was out moth-ing.





Orange tip

The adult is mostly recorded in late spring and early summer. It is patchily-distributed, favouring marshy areas.





Small copper

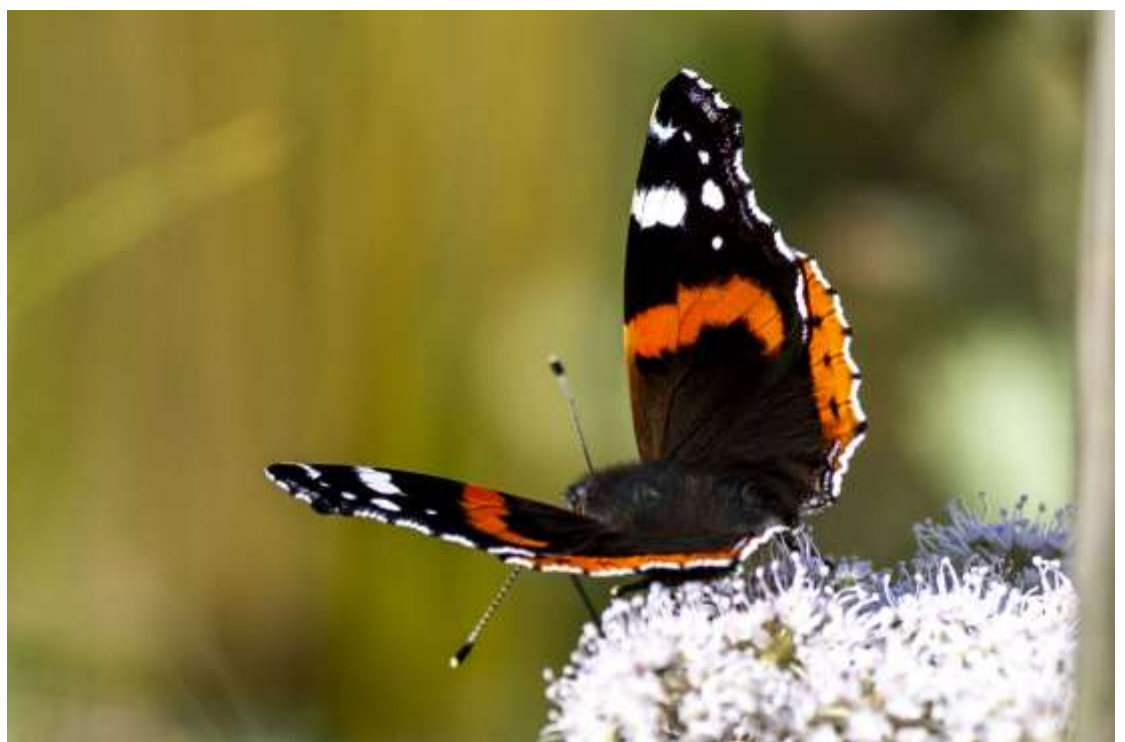
Fairly widely distributed in Fife. The shot on the right was taken with flash after dark while mothing.





Red admiral

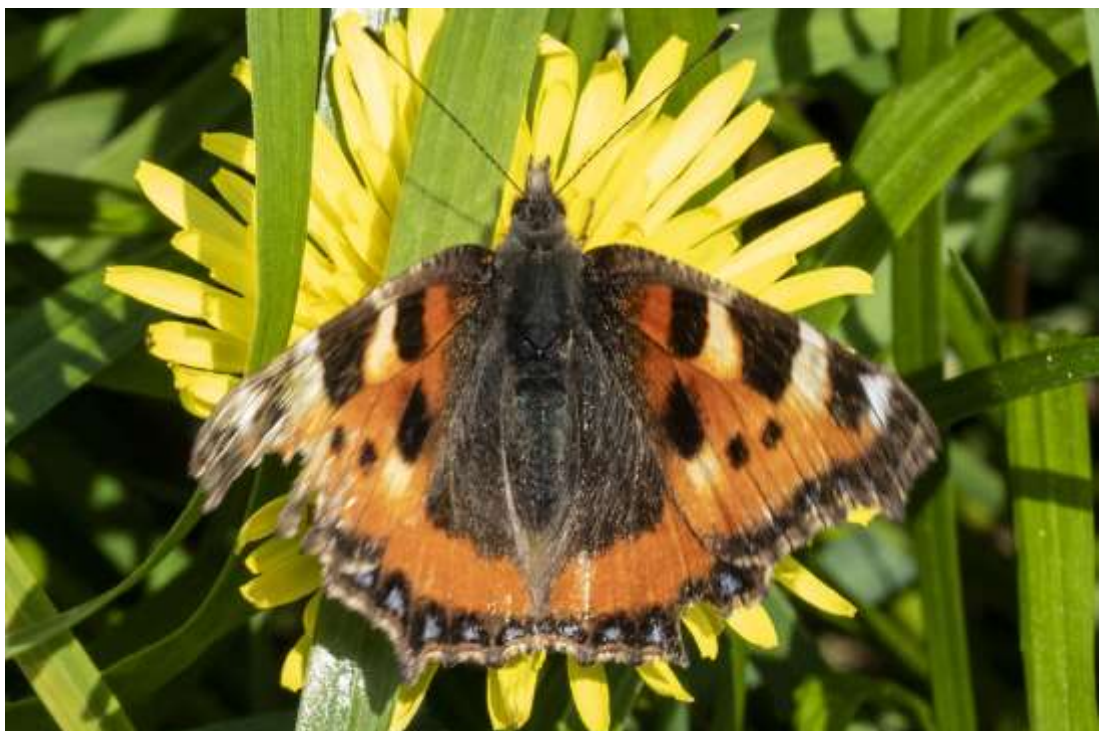
A common species especially in late summer.





Small tortoiseshell

A common and familiar species.





Peacock

The peacock has spread north in recent years and is now one of the most common butterflies in Fife.





Comma

A distinctive species that has spread northwards into Fife. This one was at Bankhead Moss in late September 2018.





Speckled wood

This species is a recent arrival to Fife. The above one was in the mixed woodland in late June 2024, and the one below was there in late September 2024.





Meadow brown

A common grassland species.





Ringlet

Common in grassland.

